



**Plot2000 NMS
Network Management System**

Installation and Administration Guide

Overview.....	3
Network Component Diagram.....	4
Installation to Server.....	5
Installation of Administration Tools.....	5
Plot2000 NMS Installation Wizard.....	6
Configure Folder Options with Plot2000 NMS Config.....	6
Push Install to workstations with Plot2000 NMS Push Install Wizard	10
Manual Install to workstation using Plot2000 Workstation Setup.exe.....	12
Configuration of Options inside AutoCAD	13

Overview

Plot2000 is a Plotting enhancement for AutoCAD. It automates the creation of single plots and batch plots in AutoCAD through the use of memorized macros. Each Plot2000 macro pre-sets most commonly-used Plot settings required in AutoCAD.

Plot2000 NMS (Network Management System) is the network management and deployment module for Plot2000. Plot2000 NMS manages all aspects of Plotting with AutoCAD in a network environment. It makes the CAD Manager and Network Administrators' job easier and saves time by not requiring visits to individual workstations to install the Plot2000 Software or manage system-wide Plot settings.

System Requirements:

Windows NT 4.0 Sp4 or greater

Windows 2000

Windows XP Professional

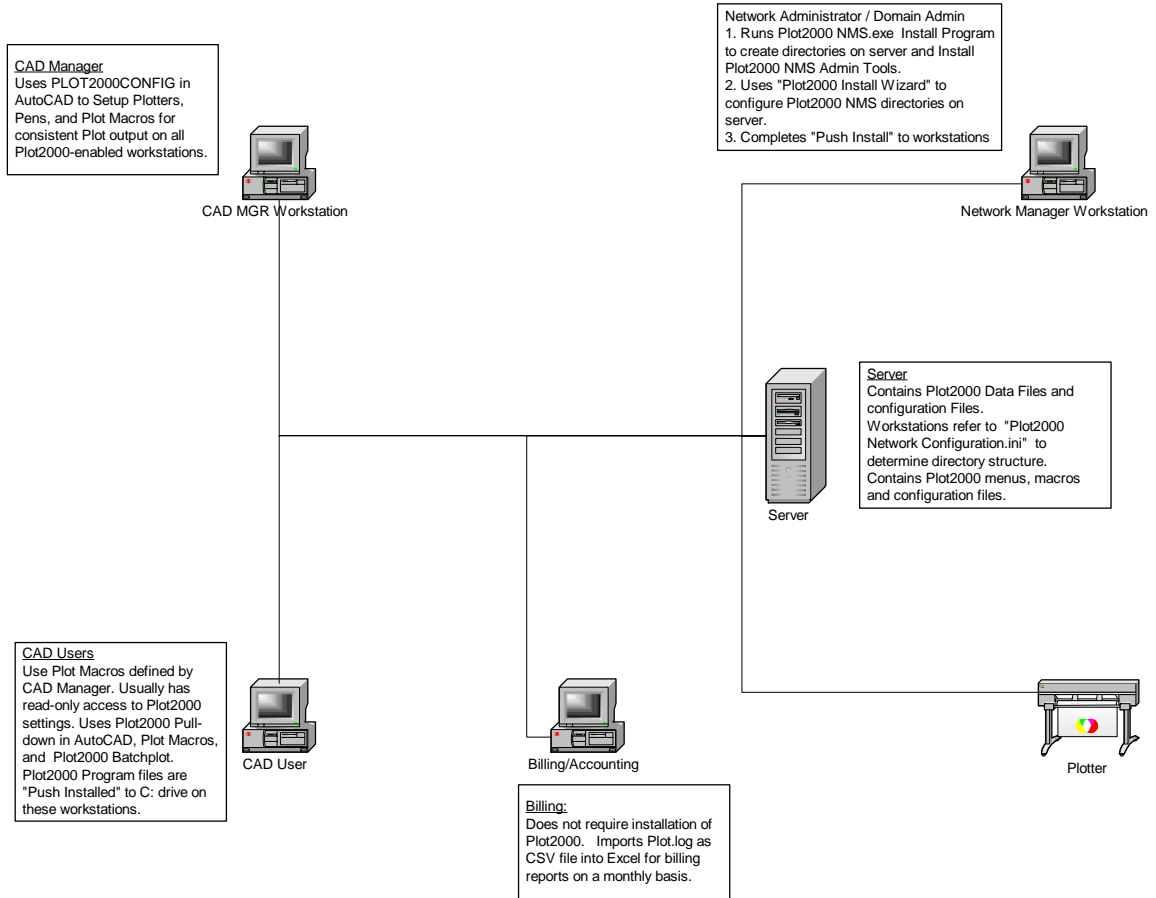
Windows XP Professional SP2 (with firewall disabled for push install)

Push Installation requires that the "Windows Installer" Service is installed and running on all workstations. This is enabled by default on modern systems.

CAD System Requirements:

AutoCAD versions 2000 thru 2007 supported.

Network Component Diagram



Installation to Server

Download and run “Plot2000 NMS.exe” to setup the Plot2000 NMS folder structure on your network. This program does not need to be run at the server console.

When prompted for the installation folder, select a share or mapped drive that is on your server and accessible to your CAD users. The base directory should preferably be called “Plot2000 NMS”.

When the installation is complete, it will automatically run the installation for “Plot2000 NMS Admin Tools.exe” from the \admin folder. See the next section for instructions on the Admin Tools.

Installation of Administration Tools

The Plot2000 NMS Administration tools can be installed on any workstation by running “Plot2000 NMS Admin Tools.exe” from the \admin folder under where you installed Plot2000 NMS.

During the installation, it will ask you for the folder where to install the Admin Tools; this should be on your local drive. Installing the Admin tools to the network will require adjusting the default Microsoft “.net” security policies – so it is recommended that you set the “Local Destination Folder” to your local hard drive.



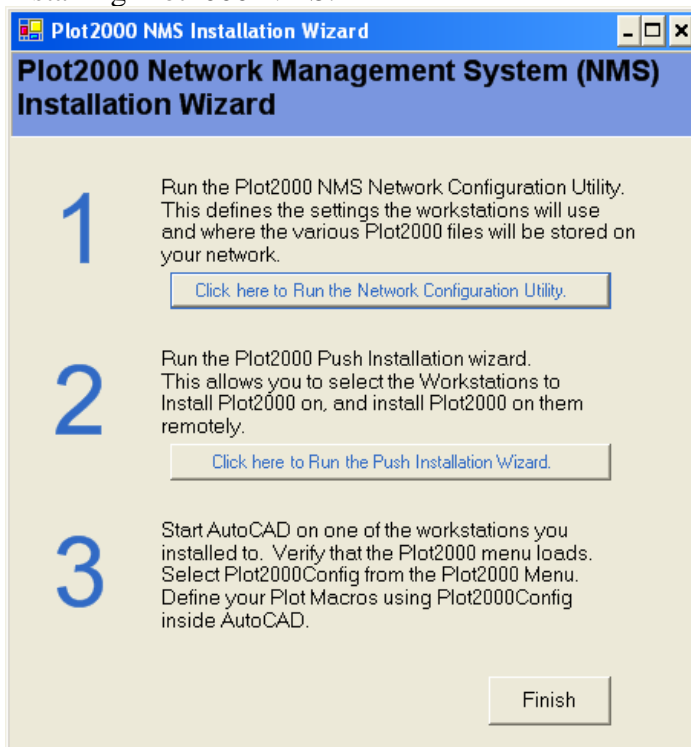
The Admin Tools installation will also ask you for the “Network Directory to Manage”. This is the folder on your network where Plot2000 NMS is installed. If you are installing

this from the same workstation where you initially installed Plot2000 NMS, this value should be set properly already. It needs to point to the “Plot2000 NMS” root folder.

After installing the Admin tools, the “Plot2000 NMS Installation Wizard” will run.

Plot2000 NMS Installation Wizard

The Plot2000 NMS Installation Wizard guides you through the remaining steps of Installing Plot2000 NMS.



There are three steps in this dialog:

1. Run “Plot2000 NMS Config”. This program allows you to modify the settings that are stored in the “Plot2000 Network Configuration.ini” File that is stored in the root folder of the Plot2000 NMS directory structure. This points the CAD workstations running Plot2000 to the correct folders on your network. See the next section for more information on this step.
2. Run the “Plot2000 NMS Push Install Wizard”. This program installs the Plot2000 Program files on your CAD workstations without requiring you to visit them. See the section “Push Install to workstations“ in this manual for more information.
3. Start AutoCAD on one of the workstations you installed Plot2000 to. Define your Plot Macros using PLOT2000CONFIG inside AutoCAD.

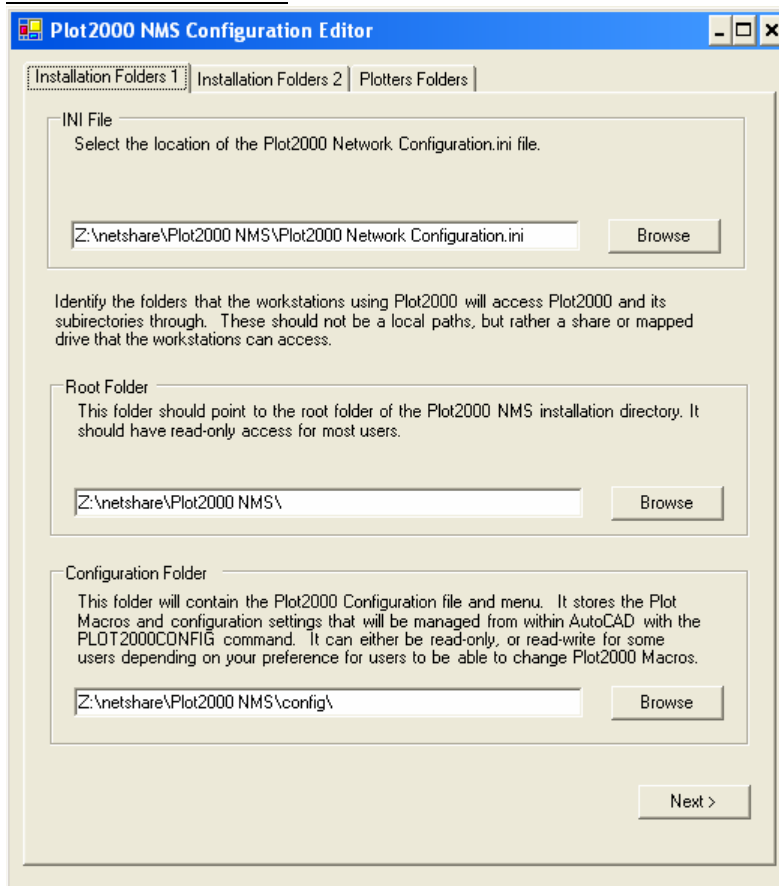
Configure Folder Options with Plot2000 NMS Config

The Plot2000 NMS Config program allows you to modify the settings that are stored in the “Plot2000 Network Configuration.ini” File that is stored in the root folder of the Plot2000 NMS directory structure. This points the CAD workstations running Plot2000 to the correct folders on your network.

All paths entered in these dialogs need to resolve properly and be accessible from your CAD systems.

You should set folder permissions using your Server's administration tools according to the options explained in these dialogs.

Installation Folders 1:



Permissions

Root Folder:
Read-only most users.

Config Folder:
Read-only most users,
Read-write for CAD
Manager and selected
“Power” users.

Installation Folders 2:

Plot2000 NMS Configuration Editor

Installation Folders 1 | **Installation Folders 2** | Plotters Folders

Identify additional Plot2000 configuration folders. These should be located on your network and accessible through a share or mapped drive from your workstations.

License Folder
This folder will contain the Plot2000 License file. This folder needs to have read-write access for all Plot2000 users.

Z:\netshare\Plot2000 NMS\license\

P2k files
Plot2000 creates .P2k files to describe printer page sizes and margins. This folder should be read-write for most users.

Z:\netshare\Plot2000 NMS\p2k files\

Plot Billing Log
If you choose to use the Plot Billing Feature of Plot2000, this folder will contain the Plot log. It should be read-write for most users.

Z:\netshare\Plot2000 NMS\Plot Log\

Permissions

License Folder:

Read-write-delete all CAD users.

P2k Files:

Read-write-delete all CAD users.

Plot Billing Log:

Read-write all CAD users.

Plotters Folders:

This dialog requires some consideration before taking the defaults. It is recommended that all workstations access your AutoCAD Plotters, Plot Styles, and Plotter Drivers through the same folders on your network. This is because variations or inconsistencies that result from storing and configuring these options locally on each workstation will eventually result in inconsistent Plotted drawings.

By default, AutoCAD stores this information locally. In a networked environment where you want all users to be using the same Pens, Plotters, and Plotter drivers storing the information locally is usually contrary to your goals. Any drawing plotted from any computer needs to come out the same regardless of the computer used to plot it.

This dialog will enable you to easily store this information on your network, but it requires a bit of work on your part. These folders are empty in Plot2000 NMS. You must copy the contents of these folders from a “good” CAD workstation to the folders on your network under the Plot2000 NMS structure. If you already store this information on your network, you can set these options to use your existing folders.

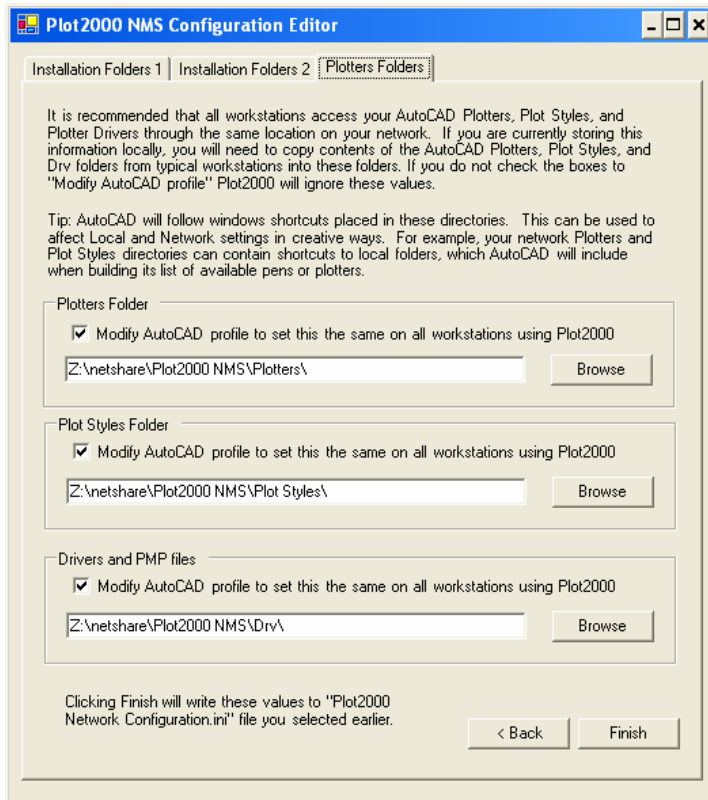
Plot2000 combines the AutoCAD PMP and Drv folder together, so you will need to combine the contents of the local \Plotters\PMP Files and \Drv folder into one directory.

Do NOT globally copy “all” the files in the DRV directory from a local workstation to the network – the DRV directory also contains video drivers, etc. Copy any special plotter driver files (.dll, .hdi extensions) to the network DRV directory. Plot2000 will add the network DRV directory to the AutoCAD search path, but the local DRV directory should be maintained on each workstation so that AutoCAD can find the video drivers it needs to start up. Some of the driver filenames for different versions of AutoCAD are the same and incompatible across versions.

These options do nothing in Plot2000 unless you leave the checkboxes to “Modify AutoCAD profile” turned on. When enabled, Plot2000 changes these paths in the AutoCAD options dialog to point to these folders each time Plot2000 loads. If a user changes these options, they will be re-set next time Plot2000 loads.

Tip: Plot2000 will follow shortcuts placed in these folders. This can be used to affect local and network settings in creative ways. For example, your network “Plot Styles” folder could contain a shortcut to a local “Plot Styles” folder where users can place special pen configuration files. Use shortcuts with care, as a shortcut to an invalid location will result in slow plotting while AutoCAD tries to resolve it.

See the next page for more information.



Permissions

Plotters Folder:

Read-only most CAD users. Read-write-delete for CAD manager and “power” users.

Plot Styles Folder:

Read-only most CAD users. Read-write-delete for CAD manager and “power” users.

Drv Folder:

Read-only most CAD users. Read-write-delete for CAD manager and “power” users.

Press Finish to save your changes. Don’t forget to copy the files from your local Plotters, Plot Styles, PMP, and Drv folders to these network locations if you enabled these options.

Push Install to workstations with Plot2000 NMS Push Install Wizard

The Plot2000 NMS Push Install Wizard allows you to install Plot2000 to your workstations without needing to visit them. You should have previously run “Plot2000 NMS Config” before attempting a push install. You do not need to be physically at the server console to run the push install program – you can do it from any workstation on your network provided you have administrator access to the destination computers.

Firewalls on workstations, such as the XP service pack 2 firewall, may prevent access to the workstations. You will require a local administrator username and password for each system, or be logged on as a domain administrator with computers joined to a domain. The push installer does not require a windows domain controller – it will work on “workgroups” of computers – but domain administrative access simplifies the authentication process.

If you have a Windows server domain, log on as a user with domain administrator privileges before doing a push install to other workstations.

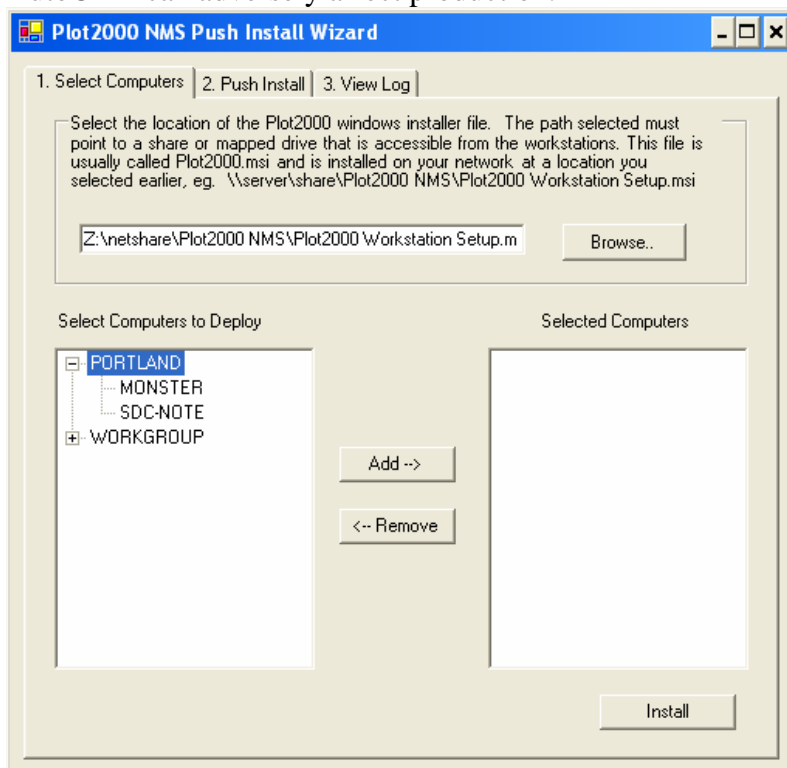
Blank “administrator” passwords on computers will prevent remote administrative access – windows disables remote access to administrator accounts on computers that do not have an administrator password set.

Machines you wish to push install to must have the “WMI Windows Installer Provider” installed. This is installed by default on modern windows operating systems. It is not installed by default on Windows server 2003 – but this does not affect the ability to push install from a server 2003 console, if desired.

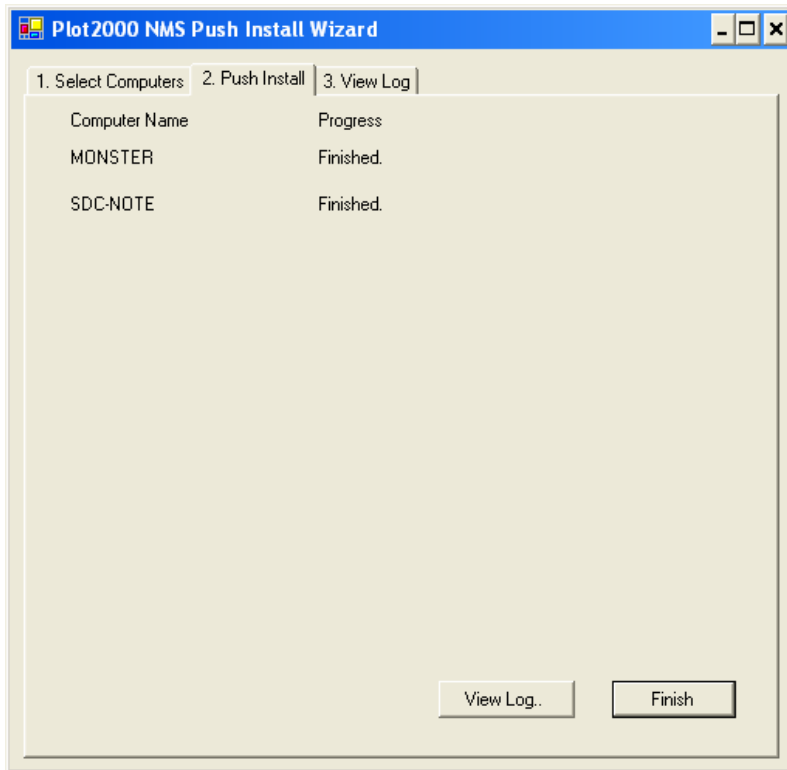
In the first screen, select the windows installer file for “Plot2000 Workstation Setup.msi” in the root directory of your Plot2000 NMS installation.

Select the computers you wish to install to. You may wish to install to one computer first, complete the Configuration in AutoCAD (see the next section in this manual), then return to the push install to finish the remaining computers after you have defined all your Plot2000 Plot macros and verified proper operation of all system settings.

Prematurely push installing to all computers before you have verified proper operation in AutoCAD can adversely affect production.



You may be prompted to authenticate to the computers if you do not already have access to them. As you select computers, the installation file is copied to the “C:” drive on each workstation. Press install when you are ready to begin the process.



The computers will be installed, up to 10 at a time until they are all completed. The Plot2000 program files are installed to each workstation's "C:" drive and the appropriate registry entries are created for it to run.

The installer "progress" column will show the windows installer log messages for each computer as they go. The column will say "Finished" as each computer completes its install.

You may be prompted for authentication again for some computers here if you were not required to authenticate in the previous dialog.

Press "View Log" when all computers are finished to see the details if you wish. Any computers that do not say "Finished" can be investigated further in the log.

Manual Install to workstation using Plot2000 Workstation Setup.exe

If a push install is not possible for you, or you wish to setup additional workstations later, you can run "Plot2000 Workstation Setup" from the root of your Plot2000 NMS installation folder at individual workstations.

Take the defaults and allow the Plot2000 program to be installed to the "C:" drive on the workstation. Start AutoCAD and see that the Plot2000 menu loads, and that the appropriate Plot macros are available from your network.

Configuration of Options inside AutoCAD

Once Plot2000 is installed, the Plot2000 macros need to be defined inside AutoCAD. Start AutoCAD and run “PLOT2000CONFIG” from the Plot2000 Pull-down.

Set the Plot Billing Log in the PLOT2000CONFIG dialog. Plot2000 will not actually record plots unless this option is set in AutoCAD. Once set, this will be used on all workstations.

All Plot2000 options set here will be available to all users on your network running a Plot2000 NMS managed installation. Spend the time to get them correct, and all users will benefit from one-click plotting – and you will get consistent output throughout your network.

Settings from this dialog are stored under your Plot2000 NMS folder in \config\Plot2000Config.lsp and are automatically available to all users upon loading a drawing.

See the Plot2000 manual at www.plot2000.com for complete instructions on how to use this dialog.